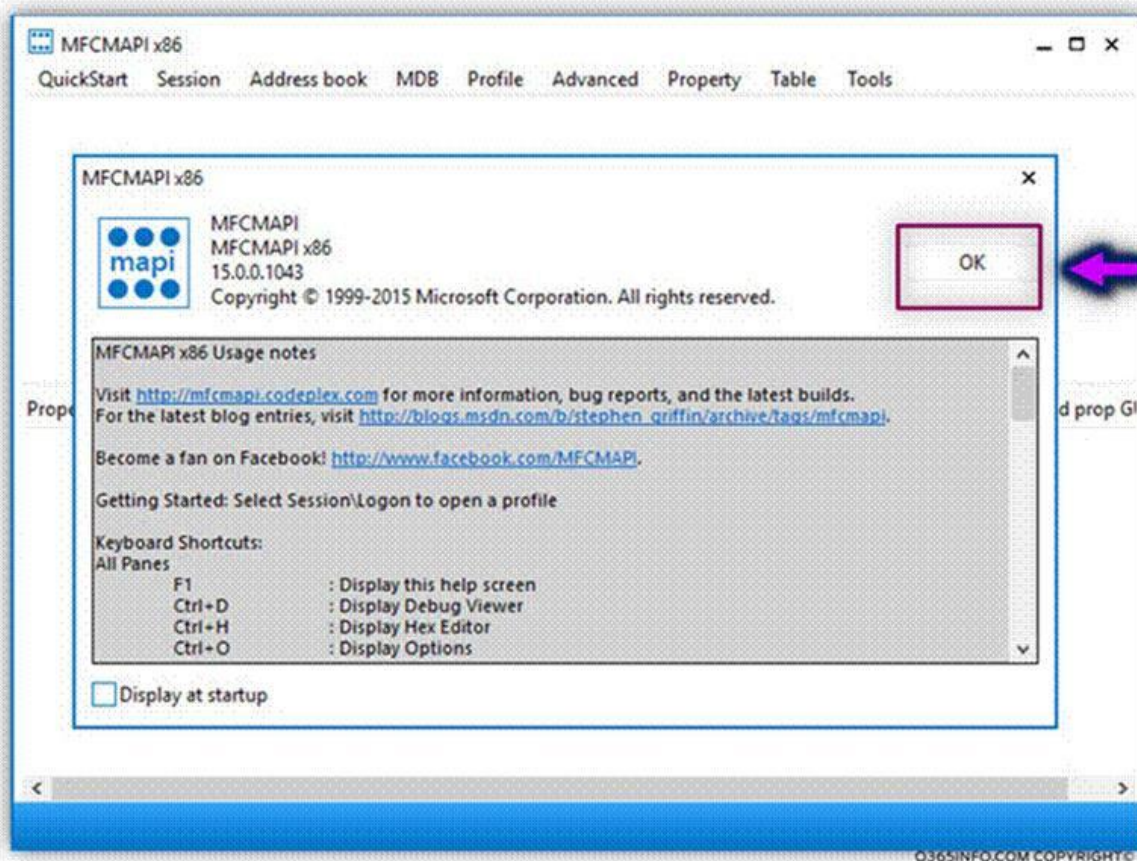


Hierbij de instructie om corrupte regels te verwijderen, dit is voor x64 outlook:

MFCMAPI implemented as EXE file; there no need to “install” the MFCMAPI

Click on the MFCMAPI executable file

Click OK on the welcome screen

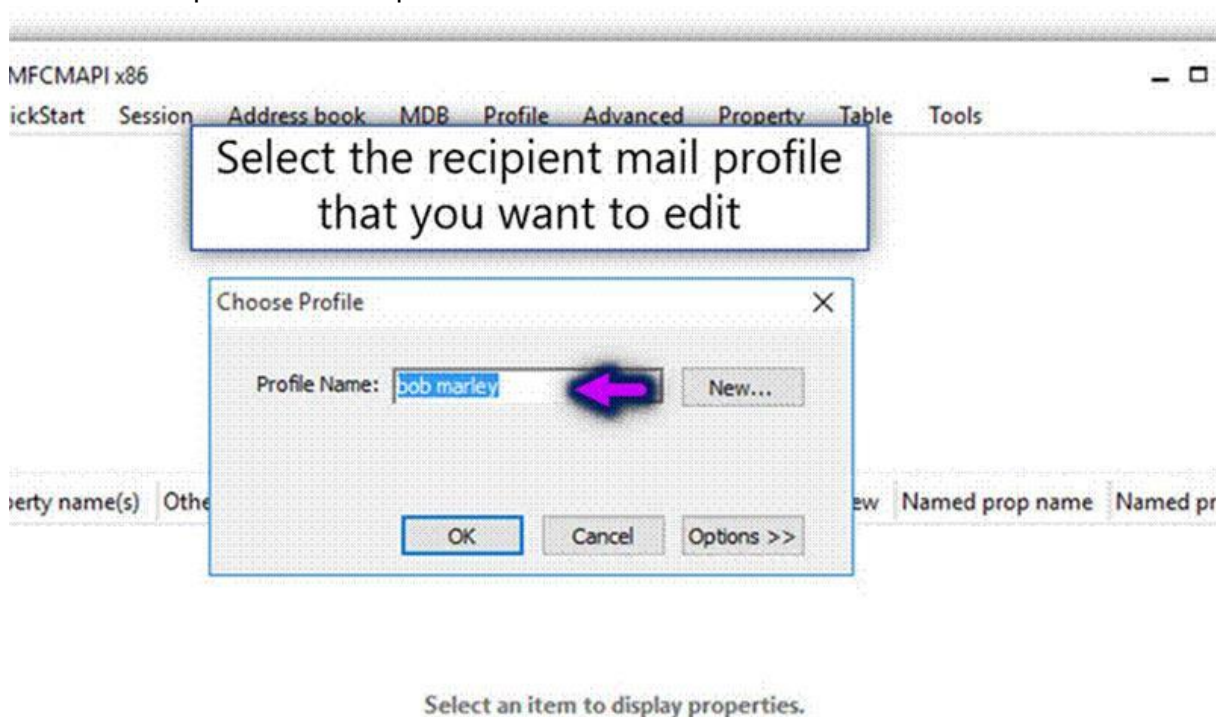


Select the Session menu

Select the Logon... menu



In our scenario, we want to use the MFCMAPI for deleting corrupted, hidden Exchange inbox rules from the Exchange mailbox of a recipient named Bob. Select the required Outlook profile



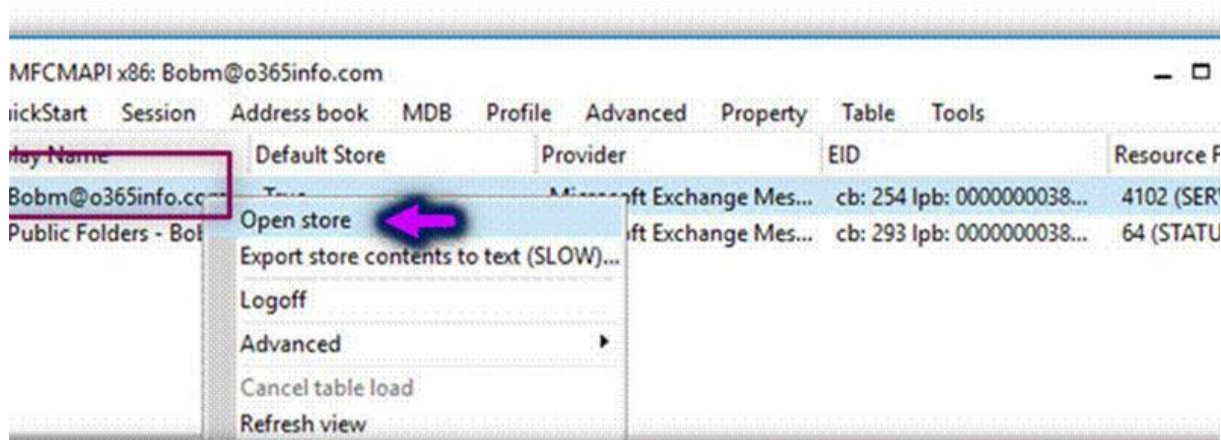
General note – a specific Outlook mail profile can serve as a container for different Exchange object such as – user mailbox, online archive, Public Folder or other mailboxes which the recipient has Full Access to these mailboxes. For this reason, when we use the MFCMAPI to log into specific Exchange recipient mailbox, we can see a couple of “databases” represented by the yellow icon.



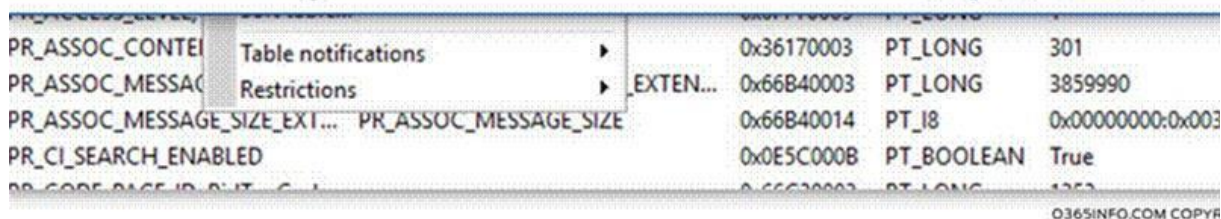
In our scenario, we wish to examine the content of Bob's mailbox.

Right click of the "yellow icon" of the user mailbox. In our example, we want to view the content of Bob mailbox.

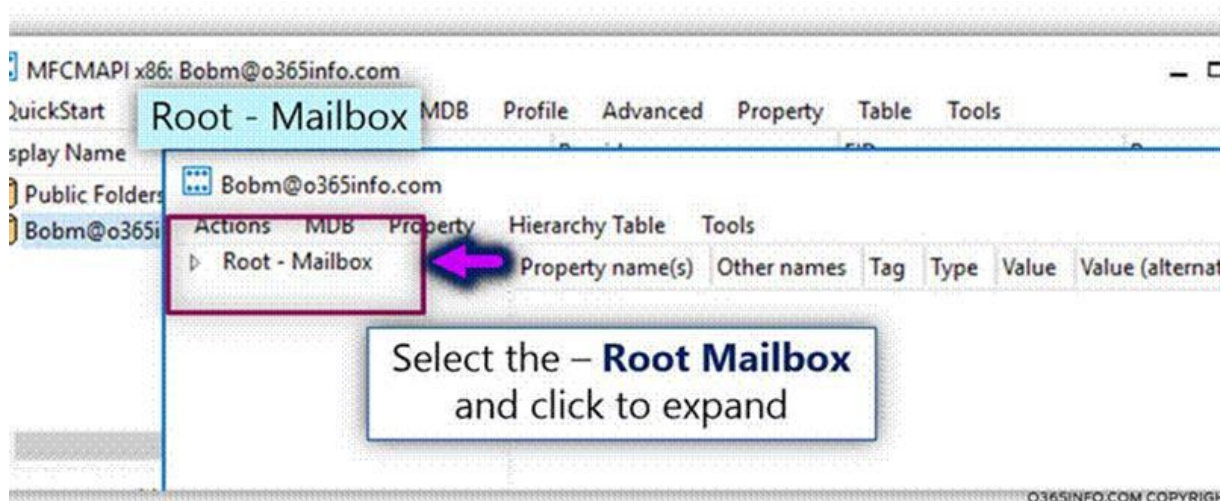
Select the menu – Open store



Select the user name "database" (Yellow icon) and double click the icon or right click and select the menu – **open store**



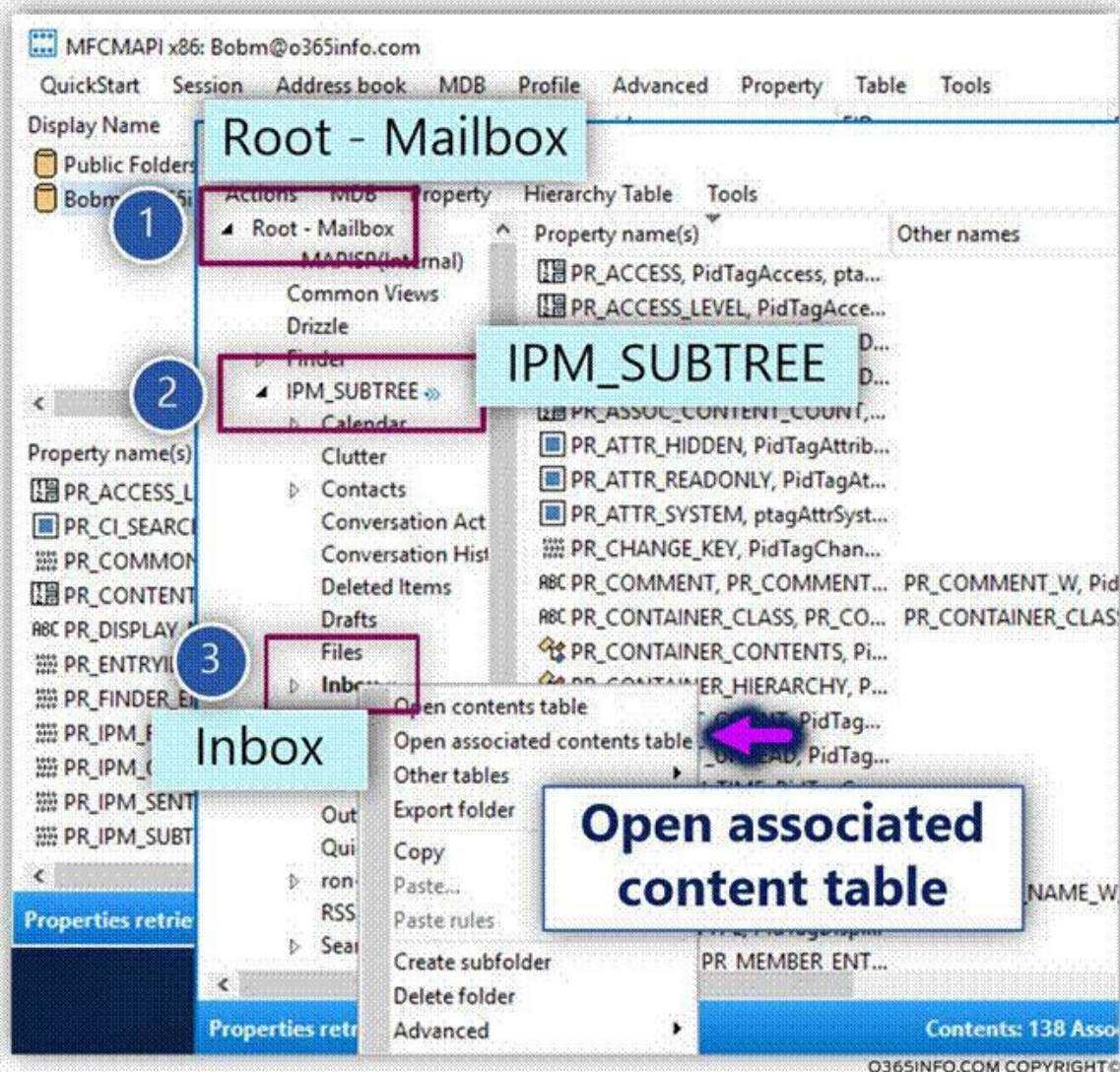
Select the folder named – Root -Mailbox and click on the small white arrow to expand the Folder hierarchy.



Click on the folder named – IPM\_SUBTREE

Click on the folder named – Inbox

Right click on the Inbox folder and select the menu – Open associated content table

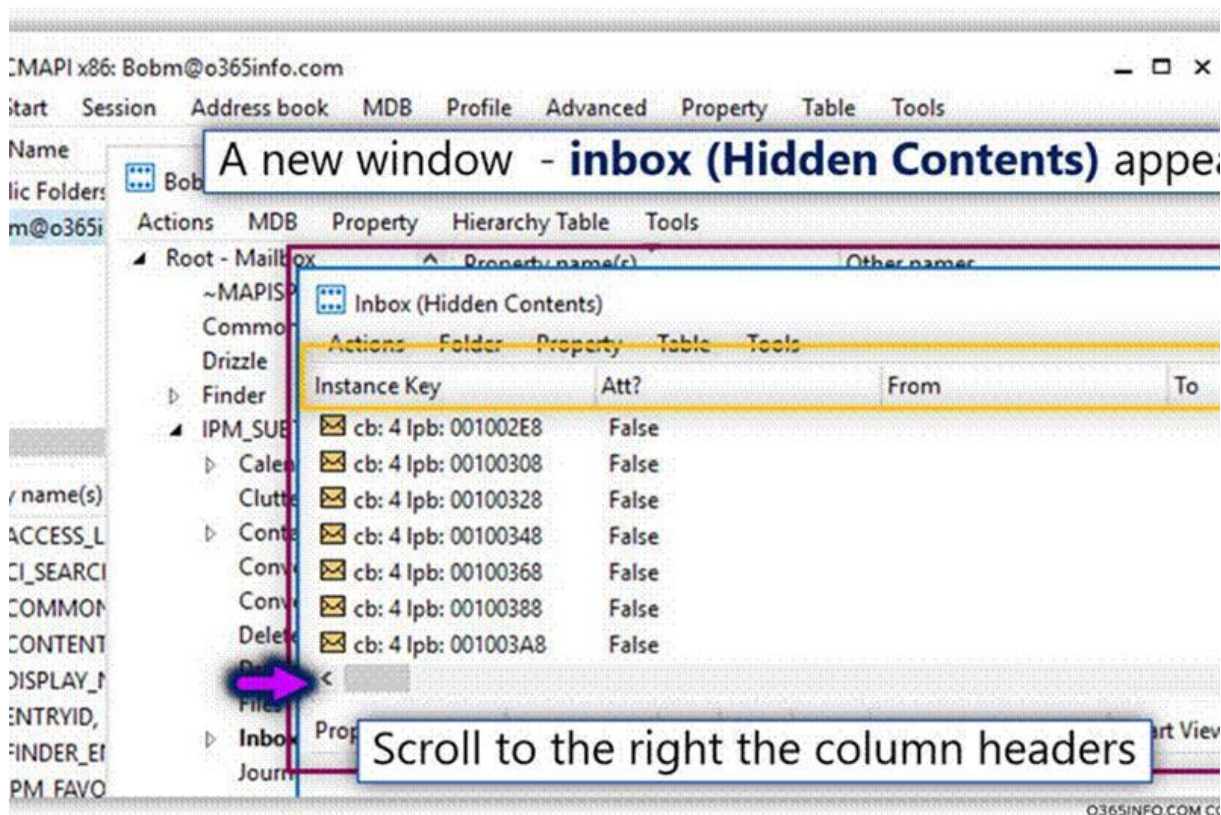




New “MFCMAPI window” appears – this window displays the internal structure of the Inbox folder. The window includes many columns.

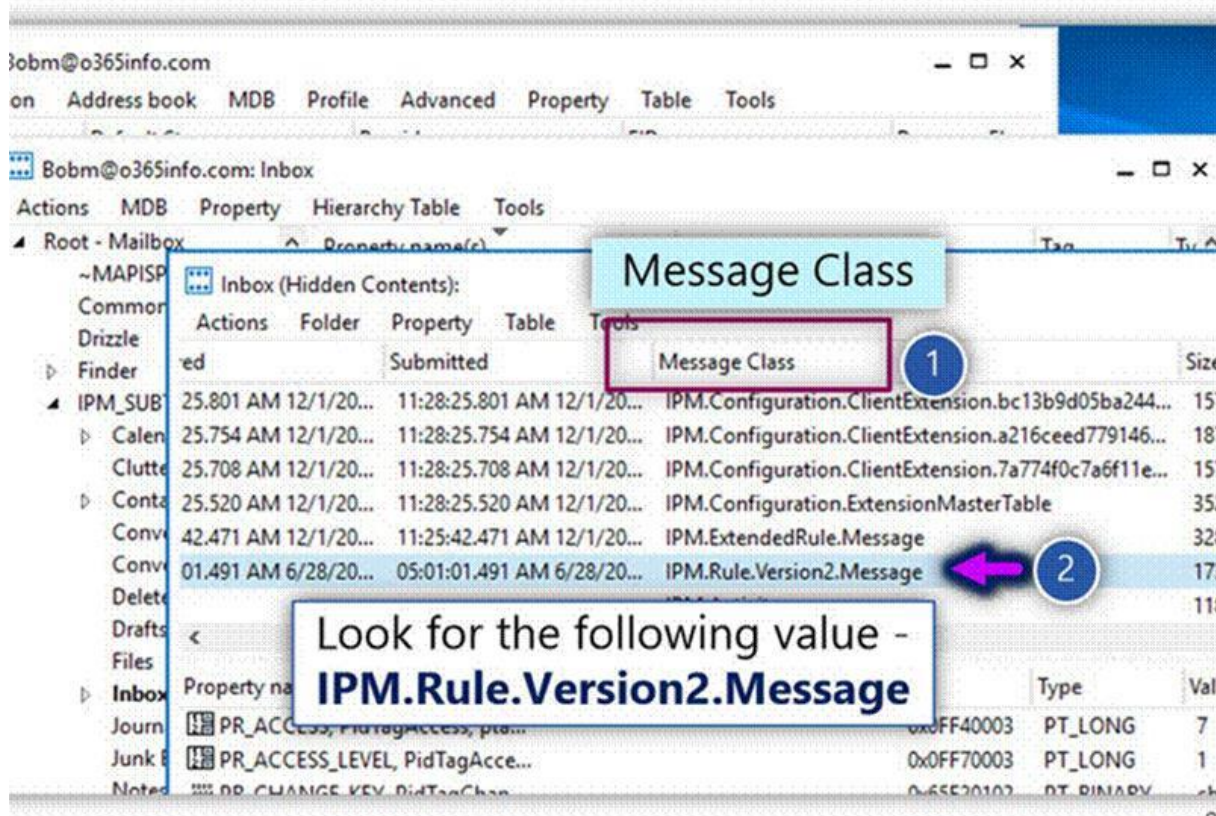
In our scenario, we want to view the content of a column named – Message Class

To view this column, scroll to the right the column headers



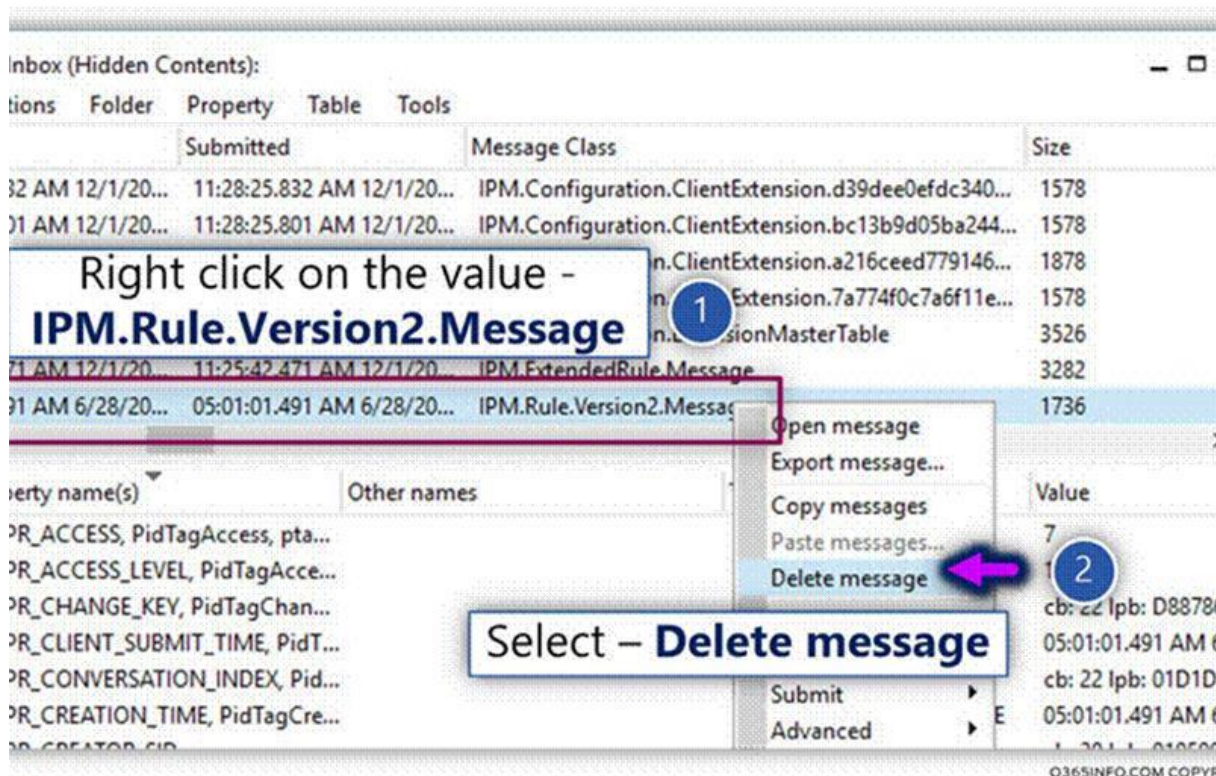
Select the column named – Message Class

The inbox rule saved as an object named – IPM.Rule.Version2.Message



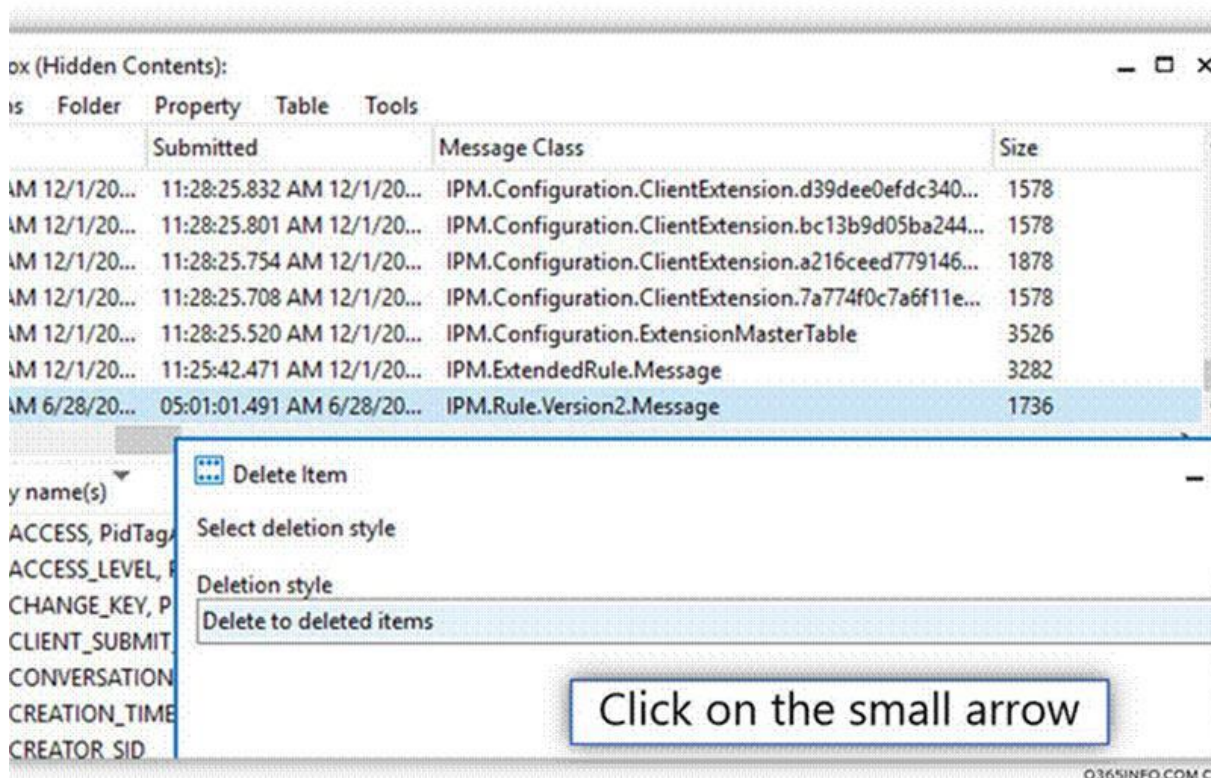
Right click on the value – Rule.Version2.Message

On the sub menu select the menu – Delete message

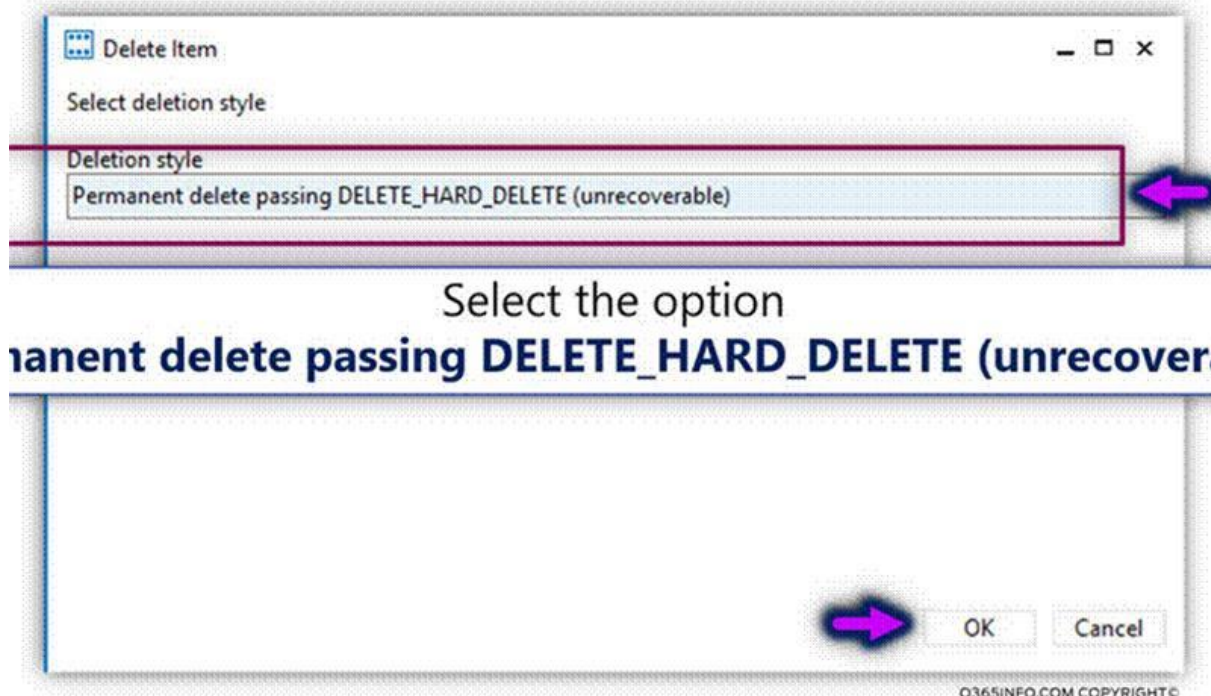




Click on the small arrow.



Select the option – Permanent delete passing DELETE\_HARD\_DELETE (unrecoverable)  
Click OK



In some scenario, when we open the Outlook mail profile of the user whom we remove his inbox rule the following warning message appears:

The rules on this computer do not match the rule on Microsoft Exchange. Only one set of rules can be kept. You will usually want to keep the rules on the server. Which rules do you want to keep?

Select – Server



Click OK

